

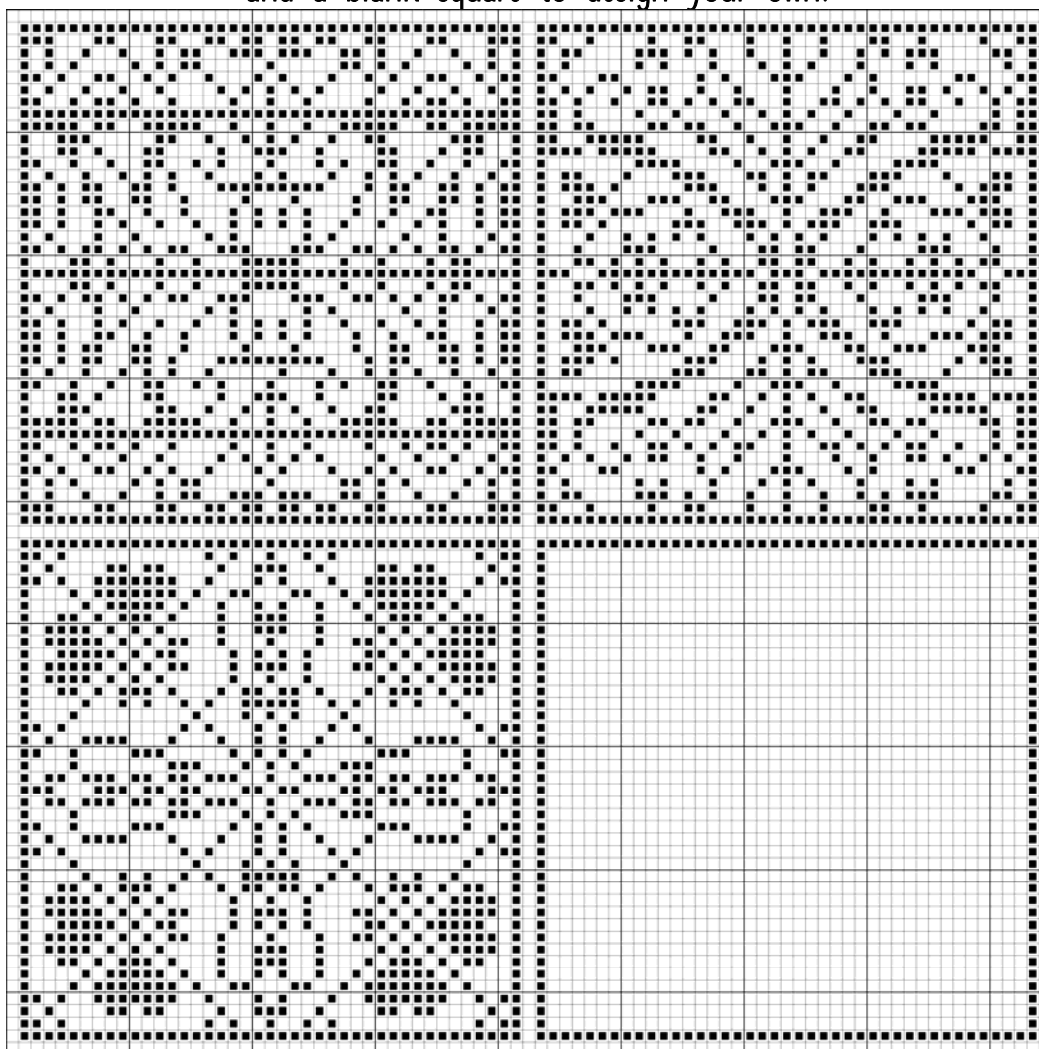
Red Velvet Inscription Sampler Supplement

A free pattern courtesy of:



Blue Ribbon Designs

Full-Size letters "M" and "N", a heart square,
and a blank square to design your own.



Red Velvet Inscription Sampler Supplement ©Copyright 2006 Blue Ribbon Designs, LLC

Threads: Threads of your choice

Model used:

Symbol	Weeks	Dye Works	DMC
■	Bordeaux		902

Fabric: Linen of your choice

Model used: 40 count Newcastle Linen
by Zweigart - Cream (3348/222/55)

Stitch Count (Each Square): 41 x 41

Each square on the graph equals 2 linen threads.

Model was stitched with one strand of floss over two linen threads.

This design may be reproduced for
newsletter or handout.

It is not to be kitted or sold.

This design may not be posted on the
Internet without written permission.

For more information, please visit www.blueribbondesigns.com.

©Copyright 2006 Blue Ribbon Designs, LLC

Blue Ribbon Designs

413 29th Street

West Des Moines, IA 50265

www.blueribbondesigns.com