

# Cardinals For A Cure

A complimentary pattern courtesy of:  
Blue Ribbon Designs



Stitch Count: 53 H x 56 W

Fabric: Linen of your choice

Model used: 40-Count Maritime White from Lakeside Linens.

Threads: Threads of your choice

Model used:

| Symbol | Weeks Dye Works Cotton Floss | DMC  |
|--------|------------------------------|------|
| ■      | Blue Spruce                  | 3362 |
| I      | Bright Leaf                  | 435  |
| ▲      | Emma's Pink                  | 962  |
| ♥      | Garnet                       | 777  |
| ●      | Liberty                      | 321  |
| ♣      | Scuppernong                  | 3364 |

Each square on the graph equals 2 linen threads.

Cross Stitch over two linen threads: use one strand of floss.

Back Stitch the pine (bottom section) with one strand Blue Spruce.

Back Stitch / Long Straight Stitch the small fir trees with one strand Scuppernong.

Back Stitch the small fir tree trunks with one strand Bright Leaf.

Cross Stitch over-one berries (bottom section) with one strand Garnet.

This design was created especially for Attic Needlework for use in the fundraiser cookbook "Recipes for a Cure" - with net proceeds being donated to the Breast Cancer Research Foundation.

Thank you for supporting this worthy cause with a donation!

©Copyright 2010 Blue Ribbon Designs, LLC

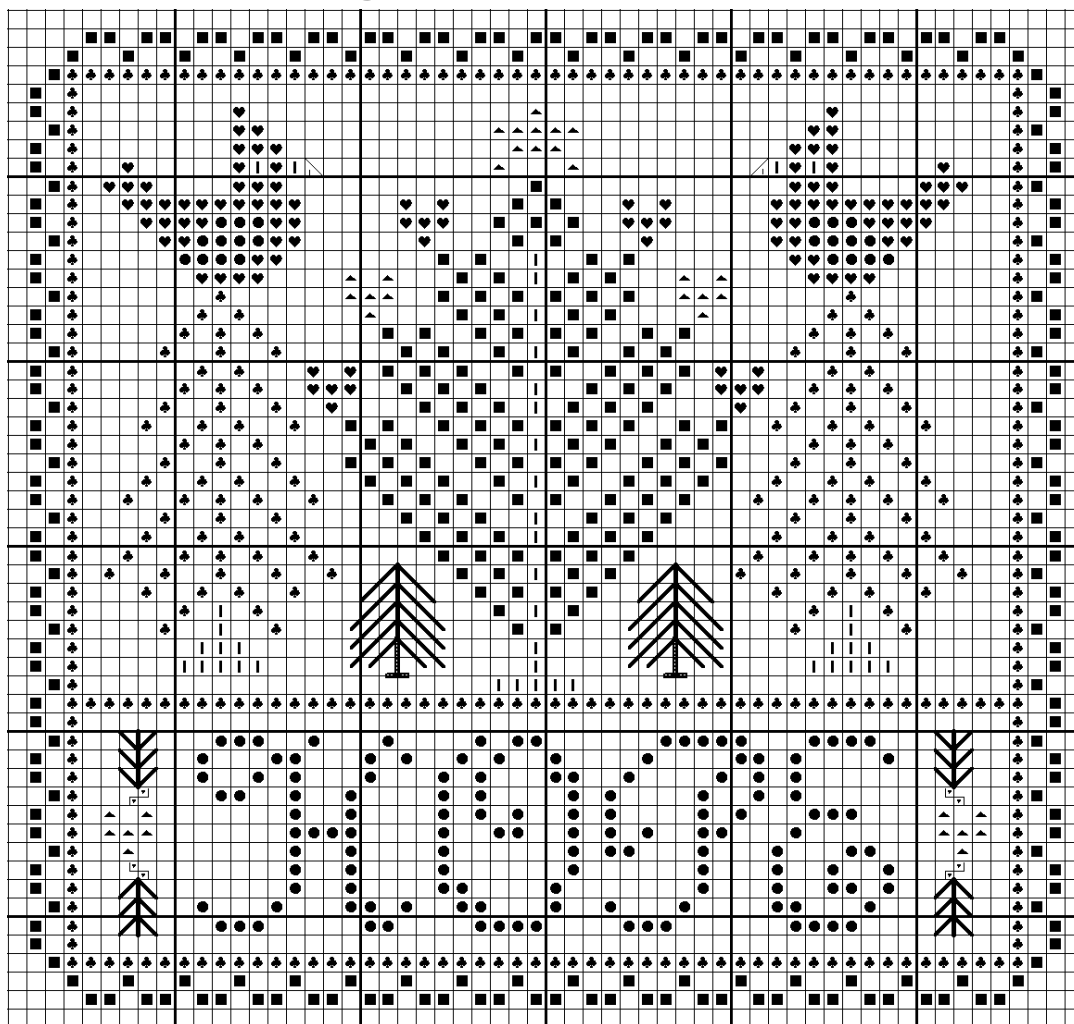
Blue Ribbon Designs

413 29<sup>th</sup> Street

West Des Moines, IA 50265

[www.blueribbondesigns.com](http://www.blueribbondesigns.com)

[designer@blueribbondesigns.com](mailto:designer@blueribbondesigns.com)



©Copyright 2010 Blue Ribbon Designs, LLC / Belinda Karls-Nace

This complimentary design may be reproduced for newsletter or handout; however, it must remain intact (as is) with all logos, notices, credits, and copyright information remaining. It may not be kitted or sold for profit. This design may not be digitized and/or posted on the Internet without written permission.