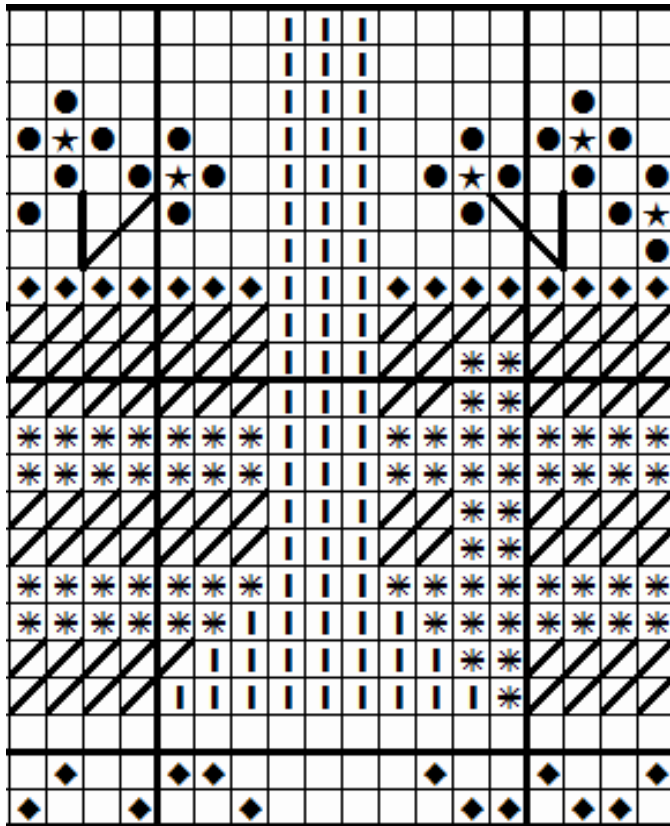


Beauty in Simplicity - Framed Sampler

Correction: The trunk of the large tree in the center should be straight all the way down. The first printing of this chart shows the bottom of the trunk (from the grass down) offset one stitch - you could stitch it the way it is charted; however, the model is stitched with the tree trunk straight all the way to the base. The corrected area is shown below:



Beauty In Simplicity - Framed Sampler (Master Chart) Correction
©Copyright 2012 Blue Ribbon Designs, LLC

Note: The tree trunk is charted/printed correctly for the lid of the Shaker box - only the framed design has a correction. The correction is for: *Framed Sampler (Master Chart)* and/or *Page - 2 Column: 1 Row: 2 of the Enlarged Framed Sampler Chart.*