

# A Star On Top

A complimentary pattern courtesy of:  
Blue Ribbon Designs



Stitch Count: 53 H x 56 W

Fabric: Linen of your choice

Model used: 32-Count Exemplar from Lakeside Linens.

Threads: Threads of your choice

Model used:

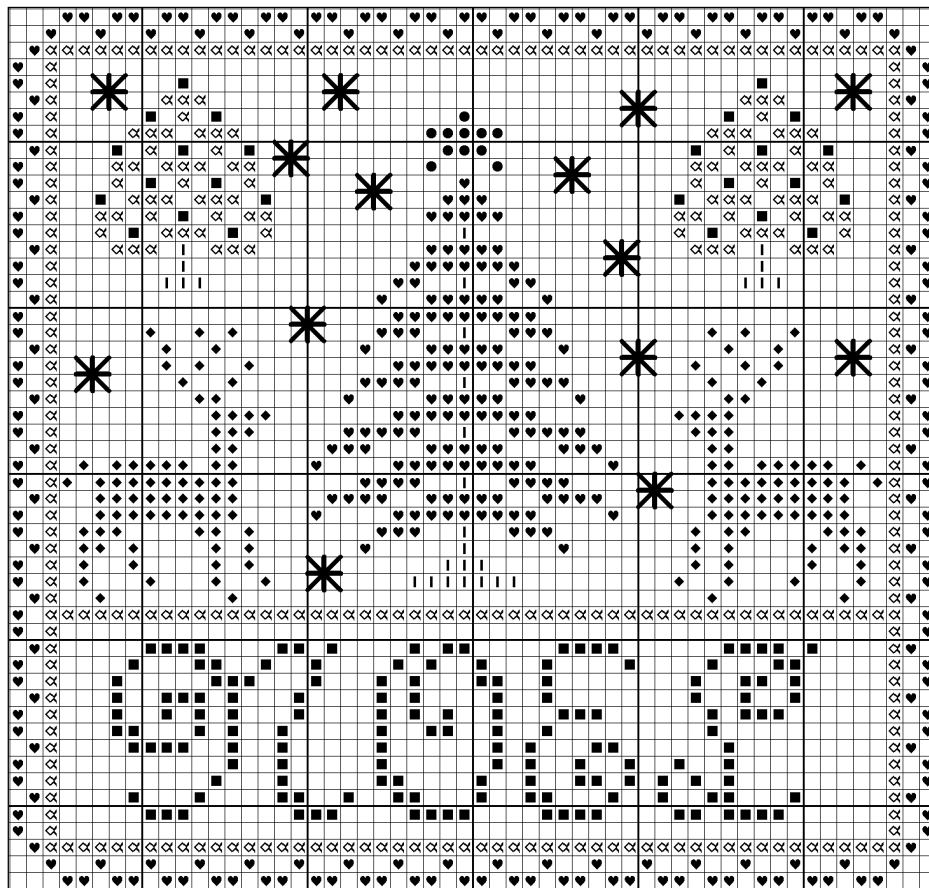
Symbol	Gentle Art Sampler Threads	DMC
♥	Blue Spruce	500
■	Cherry Wine	777
●	Gold Leaf	3852
□	Picket Fence	White
⋈	Pine	501
I	Sarsaparilla	632
◆	Tarnished Gold	420

Each square on the graph equals 2 linen threads.

Cross-stitch over two linen threads: use two strands of floss.

Snowflakes are a Smyrna Cross Stitch with two strands of Picket Fence.

This complimentary design may be reproduced for newsletter or handout; however, it must remain intact (as is) with all logos, notices, credits, and copyright information remaining. It is not to be kitted or sold. This design may not be digitized and/or posted on the Internet without written permission.



©Copyright 2007 Blue Ribbon Designs, LLC / Belinda Karls-Nace

©Copyright 2007 Blue Ribbon Designs, LLC

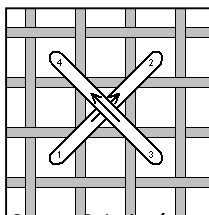
Blue Ribbon Designs

413 29<sup>th</sup> Street

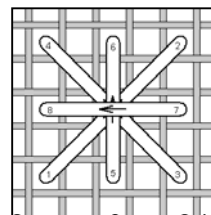
West Des Moines, IA 50265

[www.blueribbondesigns.com](http://www.blueribbondesigns.com)

[designer@blueribbondesigns.com](mailto:designer@blueribbondesigns.com)



Cross Stitch (over two)



Smyrna Cross Stitch